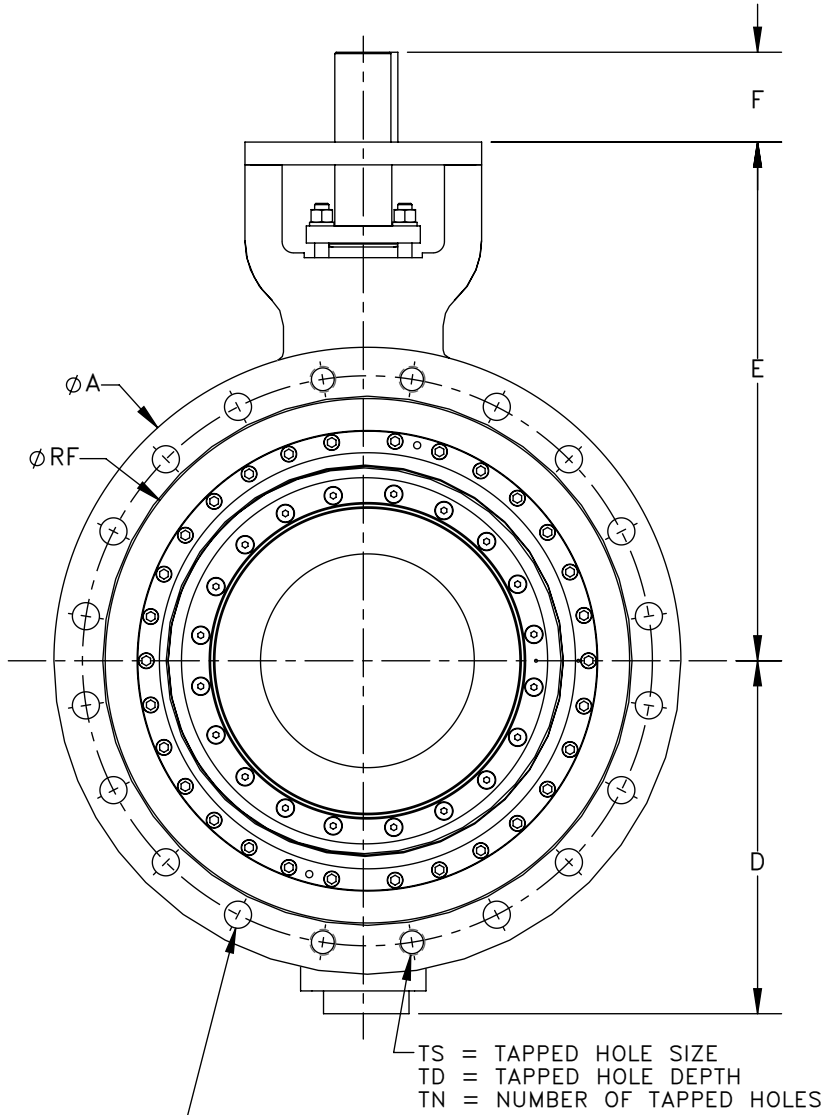
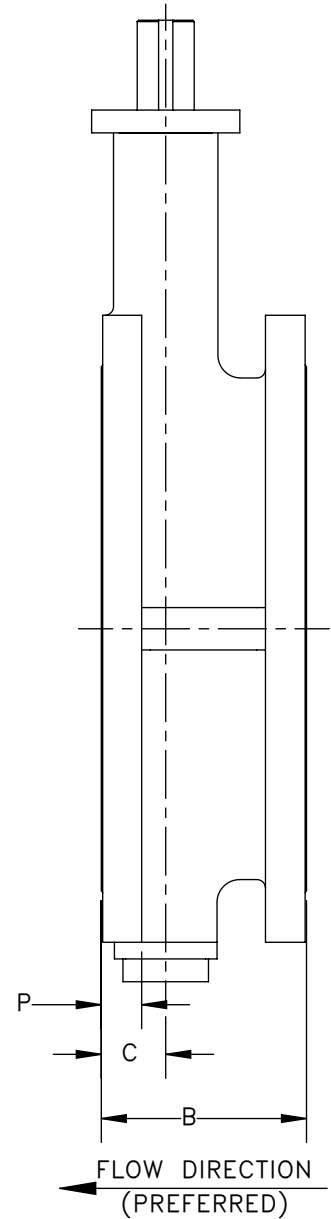


CUSTOMER SPECIFICATIONS (PROJECT, PROJECT NUMBER, FLANGE DRILLING, PRESSURE RATING, ETC)

SERIES F0 DOUBLE FLANGE WITH BARE STEM  
SIZE 3"-24" ASME B16.5 CLASS 150  
API 609 TABLE 3C CATEGORY B  
ISO 5752 COLUMN 13 FACE TO FACE



ØHD = THRU HOLE DIAMETER  
SHN = NUMBER OF THRU HOLES [SHAFT SIDE]  
DHN = NUMBER OF THRU HOLES [DISC SIDE]  
ØBCD = BOLT CIRCLE DIAMETER





DIVISION **BUSA** THIRD ANGLE CUSTOMER  
PRIMARY UNITS **INCH**

ERN **159421** DRAWING NO. **ES-00187**  
RELEASED **07/11/2014** BY **BUSA Steven Ospina** SHEET **2 OF 3** REV. **2**

CUSTOMER SPECIFICATIONS (PROJECT, PROJECT NUMBER, FLANGE DRILLING, PRESSURE RATING, ETC)

SERIES F0 DOUBLE FLANGE WITH BARE STEM  
SIZE 3"-24" ASME B16.5 CLASS 150  
API 609 TABLE 3C CATEGORY B  
ISO 5752 COLUMN 13 FACE TO FACE

VALVE SIZE	VALVE					WEIGHT
	B	C	D	E	F	lb
3"	4.50	1.15	4.27	6.75	1.25	34
4"	5.00	1.28	4.68	7.50	1.25	45
6"	5.50	1.34	5.85	8.25	1.25	67
8"	6.00	1.51	7.12	9.50	1.25	104
10"	6.50	1.65	8.66	10.75	2.00	159
12"	7.00	1.80	10.23	12.25	2.00	232
14"	7.50	2.08	11.44	14.00	2.00	325
16"	8.50	2.37	12.75	17.75	2.50	498
18"	8.75	2.54	14.48	20.00	2.50	633
20"	9.00	2.83	15.48	22.75	4.00	777
24"	10.50	3.14	17.18	23.75	4.00	1208

VALVE SIZE	VALVE FLANGE									
	∅A	∅RF	P	∅BCD	TS	TN	TD	∅HD	SHN	DHN
3"	7.50	5.00	0.97	6.00	5/8-11UNC	-	-	0.69	4	4
4"	9.00	6.19	0.97	7.50	5/8-11UNC	4	THRU	0.69	8	4
6"	11.00	8.50	1.03	9.50	3/4-10UNC	4	THRU	0.81	8	4
8"	13.50	10.62	1.15	11.75	3/4-10UNC	4	THRU	0.81	8	4
10"	16.00	12.75	1.21	14.25	7/8-9UNC	4	THRU	0.94	12	8
12"	19.00	15.00	1.28	17.00	7/8-9UNC	4	THRU	0.94	12	8
14"	21.00	16.25	1.40	18.75	1-8UNC	4	THRU	1.06	12	8
16"	23.50	18.50	1.47	21.25	1-8UNC	4	1.63	1.06	16	12
18"	25.00	21.00	1.59	22.75	1.12-8UN	4	1.50	1.19	16	12
20"	27.50	23.00	1.71	25.00	1.12-8UN	4	1.13	1.19	20	16
24"	32.00	27.25	1.90	29.50	1.25-8UN	4	1.50	1.31	20	16

NOTES:

- ALL DIMENSIONS ARE EXPRESSED IN INCHES.
- PREFERRED VALVE INSTALLATION IS WITH VALVE SHAFT HORIZONTAL OR WITH A SLIGHT VERTICAL INCLINE.



DIVISION	THIRD ANGLE	CUSTOMER
BUSA		
PRIMARY UNITS	MM	

ERN	159421	DRAWING NO.	ES-00187
RELEASED	BUSA Steven Ospina	SHEET	3 OF 3
	07/11/2014	REV.	2

CUSTOMER SPECIFICATIONS (PROJECT, PROJECT NUMBER, FLANGE DRILLING, PRESSURE RATING, ETC)

SERIES F0 DOUBLE FLANGE WITH BARE STEM  
 SIZE 3"-24" ASME B16.5 CLASS 150  
 API 609 TABLE 3C CATEGORY B  
 ISO 5752 COLUMN 13 FACE TO FACE

VALVE SIZE	VALVE					WEIGHT
	B	C	D	E	F	kg
80	114	29	108	171	32	15
100	127	33	119	191	32	20
150	140	34	149	210	32	30
200	152	38	181	241	32	47
250	165	42	220	273	51	72
300	178	46	260	311	51	105
350	191	53	291	356	51	147
400	216	60	324	451	64	226
450	222	65	368	508	64	287
500	229	72	393	578	102	352
600	254	80	436	603	102	548

VALVE SIZE	VALVE FLANGE									
	ØA	ØRF	P	ØBCD	TS	TN	TD	ØHD	SHN	DHN
80	191	127	25	152	5/8-11UNC	-	-	18	4	4
100	229	157	25	191	5/8-11UNC	4	THRU	18	8	4
150	279	216	26	241	3/4-10UNC	4	THRU	21	8	4
200	343	270	29	298	3/4-10UNC	4	THRU	21	8	4
250	406	324	31	362	7/8-9UNC	4	THRU	24	12	8
300	483	381	33	432	7/8-9UNC	4	THRU	24	12	8
350	533	413	36	476	1-8UNC	4	THRU	27	12	8
400	597	470	37	540	1-8UNC	4	41	27	16	12
450	635	533	40	578	1.12-8UN	4	38	30	16	12
500	699	584	43	635	1.12-8UN	4	29	30	20	16
600	813	692	48	749	1.25-8UN	4	38	33	20	16

NOTES:

- ALL DIMENSIONS ARE EXPRESSED IN MM.
- PREFERRED VALVE INSTALLATION IS WITH VALVE SHAFT HORIZONTAL OR WITH A SLIGHT VERTICAL INCLINE.