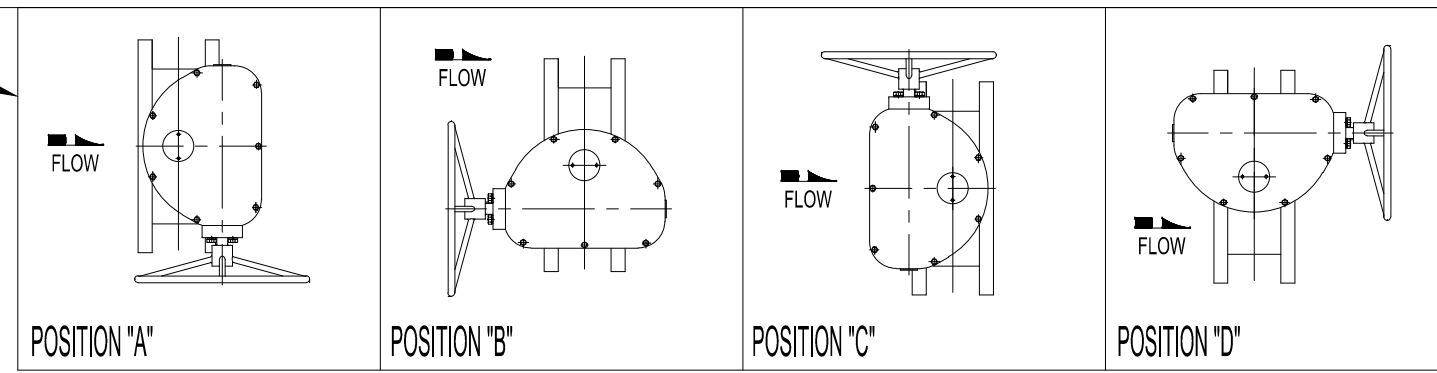
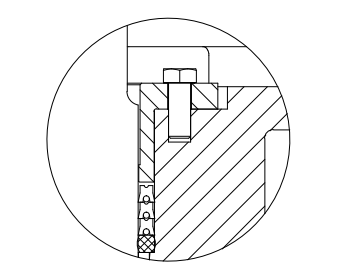
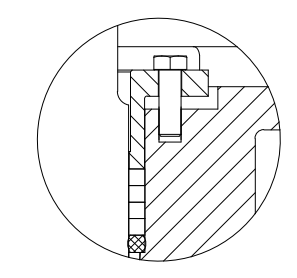
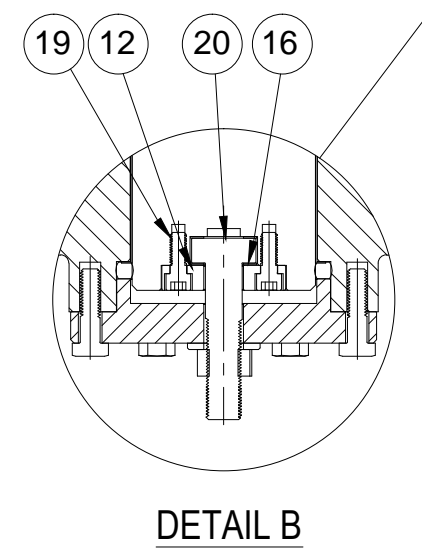
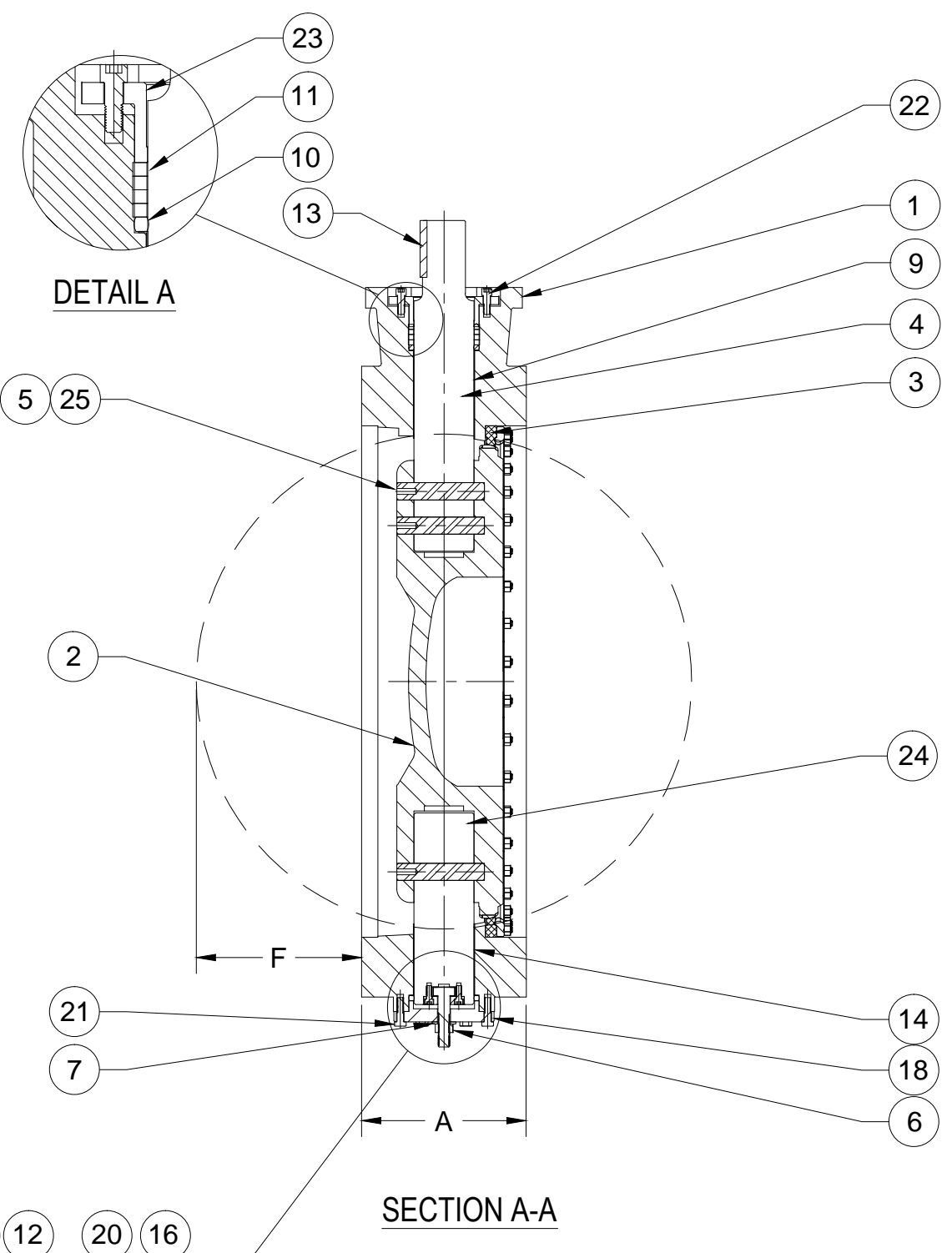
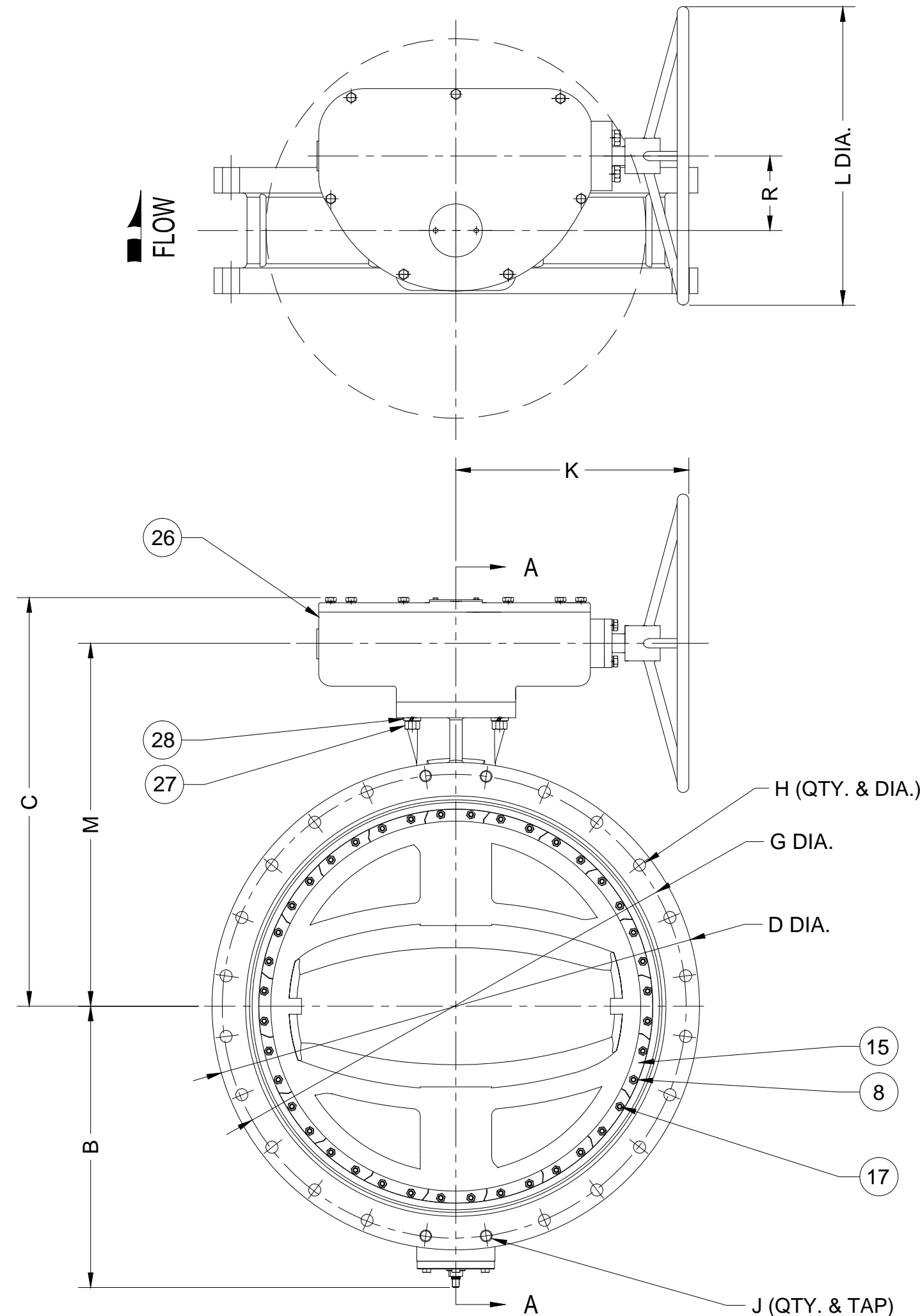


REV.	DESCRIPTION	DATE	BY
A	ADDED DIM'S FOR 54" & 60"	8-17-2010	JT
B	ADDED NO.2 IN NOTE & POSITION NOTE.	5-03-2011	RJT
C	REVISED PARTS LIST	06-23-2014	BRF

OPTIONAL ACTUATOR POSITIONS;  
CUSTOMER TO SPECIFY POSITION  
w/ORDER; POSITION "A" SHOWN  
ON MAIN VIEW.



PARTS LIST	
NO.	NAME
1	BODY
2	DISC
3	SEAT
4	UPPER SHAFT
5	DISC PINS
6	BEARING NUT
7	THRUST WASHER
8	RETAINER NUT
9	UPPER BEARING
10	O-RING
11	PACKING / U-CUP
12	THRUST COLLAR
13	KEY
14	LOWER BEARING
15	SEAT RETAINER SEGMENT
16	THRUST WASHER
17	RETAINER STUD
18	END PLATE
19	THRUST COLLAR SCREWS
20	ADJUSTABLE THRUST BEARING
21	END PLATE SCREWS
22	PACKING SCREWS
23	PACKING GLAND
24	LOWER SHAFT
25	DISC SET SCREWS
26	TRAVELING NUT ACTUATOR
27	ACTUATOR SCREWS
28	ACTUATOR WASHERS



- TECHNICAL REQUIREMENTS:
- DESIGN STANDARD, AWWA C504
  - FLANGE DRILLING PER ANSI B16.1 CLASS 125 FOR BOTH CLASS 150B AND 250B VALVES.
  - DIMENSIONS IN INCHES, WEIGHT IN POUNDS. DOES NOT INCLUDE ACTUATOR.
  - WORKING PRESSURE 150 PSI OR 250 PSI BASED ON CLASS.
  - SHAFT DIAMETER AND BODY WALL THICKNESS PER AWWA C504.

72"	18	49.61	64.50	86.47	25.98	82.50	(52) Ø2	(8) 1 3/4-5	21.00	31.50	57.56	10.50	10710
66"	18	46.13	60.44	80.00	23.09	76.00	(44) Ø2	(8) 1 3/4-5	21.00	31.50	53.50	10.50	8680
60"	15	41.59	54.08	73.03	21.32	69.25	(44) Ø2	(8) 1 3/4-5	18.95	24.00	48.51	8.50	6845
54"	15	37.83	50.97	66.25	18.27	62.75	(36) Ø2	(8) 1 3/4-5	18.95	24.00	45.40	8.50	5410
48"	15	34.88	44.81	59.50	16.50	56.00	(36) Ø1 5/8	(8) 1 1/2-6	17.00	23.63	39.88	7.48	4764
42"	12	29.68	41.02	53.00	15.00	49.50	(30) Ø1 5/8	(6) 1 1/2-6	17.00	23.63	36.10	7.48	3564
36"	12	26.63	36.83	46.00	12.00	42.75	(28) Ø1 5/8	(4) 1 1/2-6	16.30	20	32.72	5.00	2104
30"	12	22.91	32.44	38.75	9.00	36.00	(24) Ø1 3/8	(4) 1 1/4-7	16.30	20	29.33	5.00	1854
SIZE	A	B	C	ØD	F	ØG	H	J	K	ØL	M	R	WGT.

**GA INDUSTRIES, LLC.**

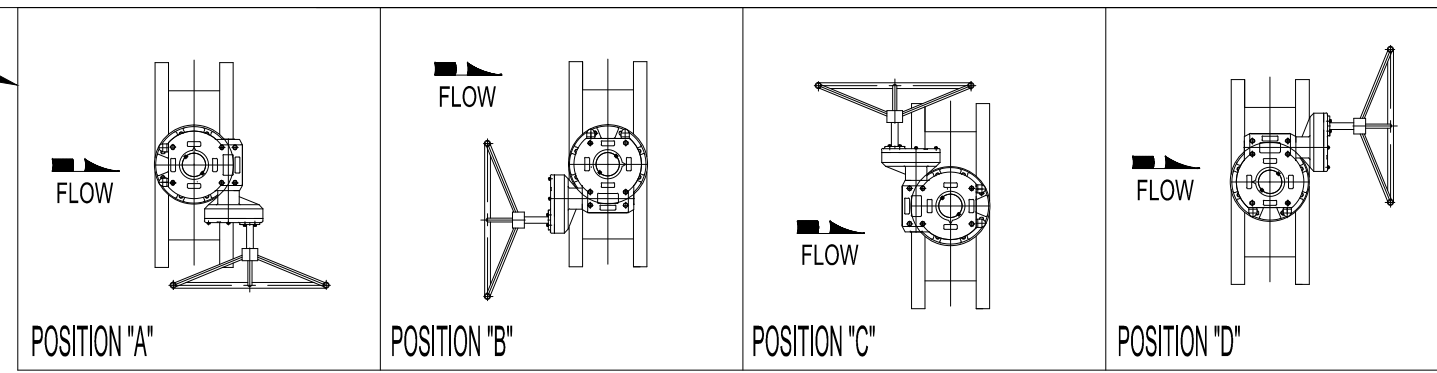
**30"-72" ANSI FLANGED BUTTERFLY VALVE  
W/ABOVE GROUND TRAVELING NUT ACTUATOR**

STANDARD TOLERANCES (UNLESS OTHERWISE NOTED) FINISHED SURFACES ONLY DIMENSIONS SHOWN IN INCHES x = ±.02 xx = ±.01 xxx = ±.002 FRACTIONS ±1/64" ANGLES ±1° FINISH -XX RMS	<b>SERIAL NO.</b>	<b>SCALE</b> N.T.S.	<b>DRAWN BY</b> RJT	
	<b>REFERENCES</b>	<b>EFFECTIVE DATE</b> 01-08-2010	<b>APPR. BY</b> JT	
	<b>FIG. NUMBER</b> 804	<b>FILE</b> BF	<b>DRAWING NO.</b> BF-1021	<b>REV.</b> C

J:\AUTOCAD\BUTTERFLYBF-SHOWBF-1021-C.DWG

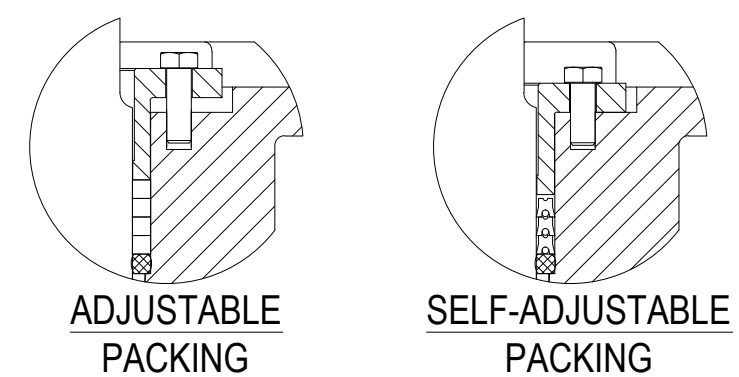
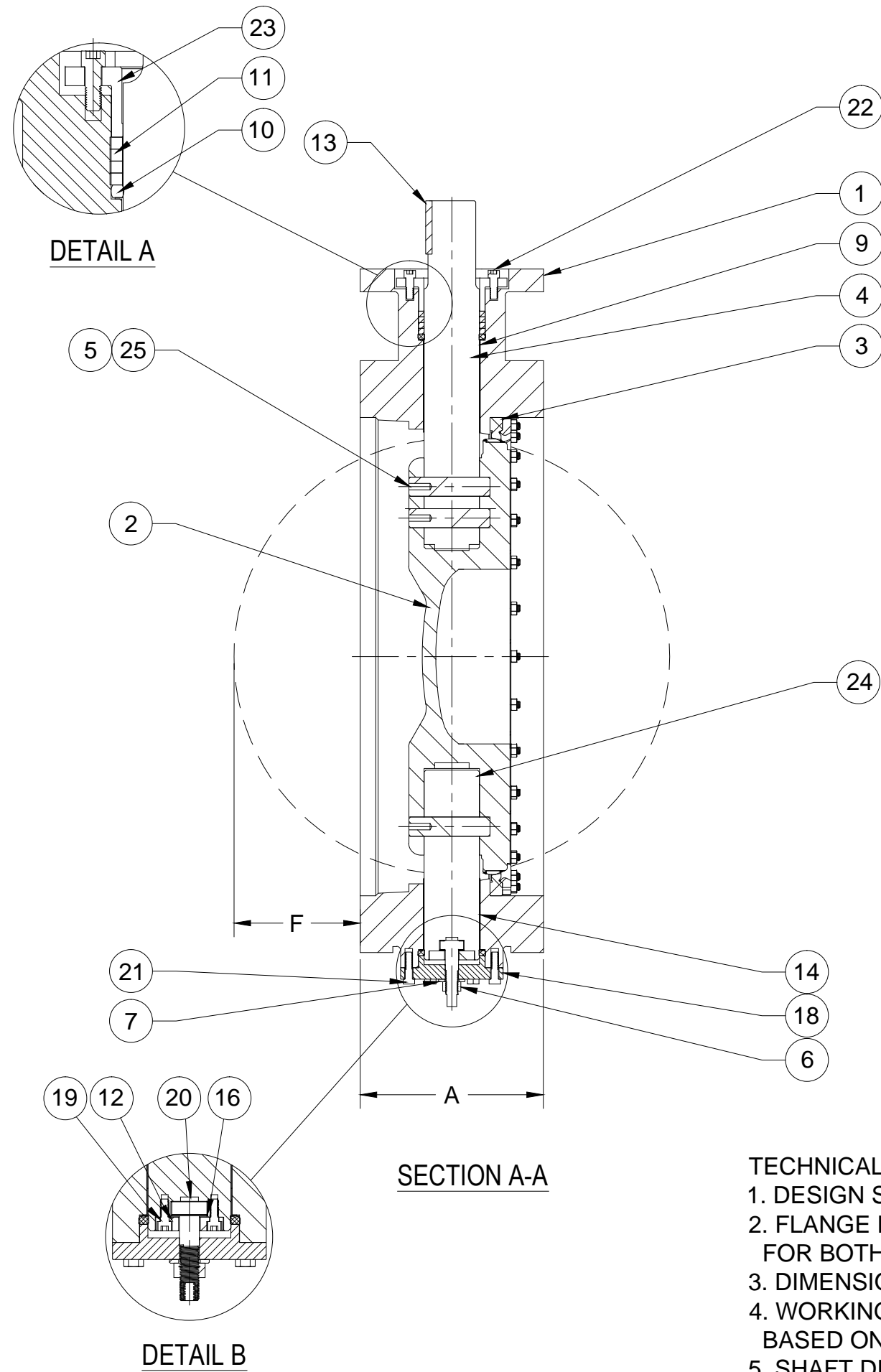
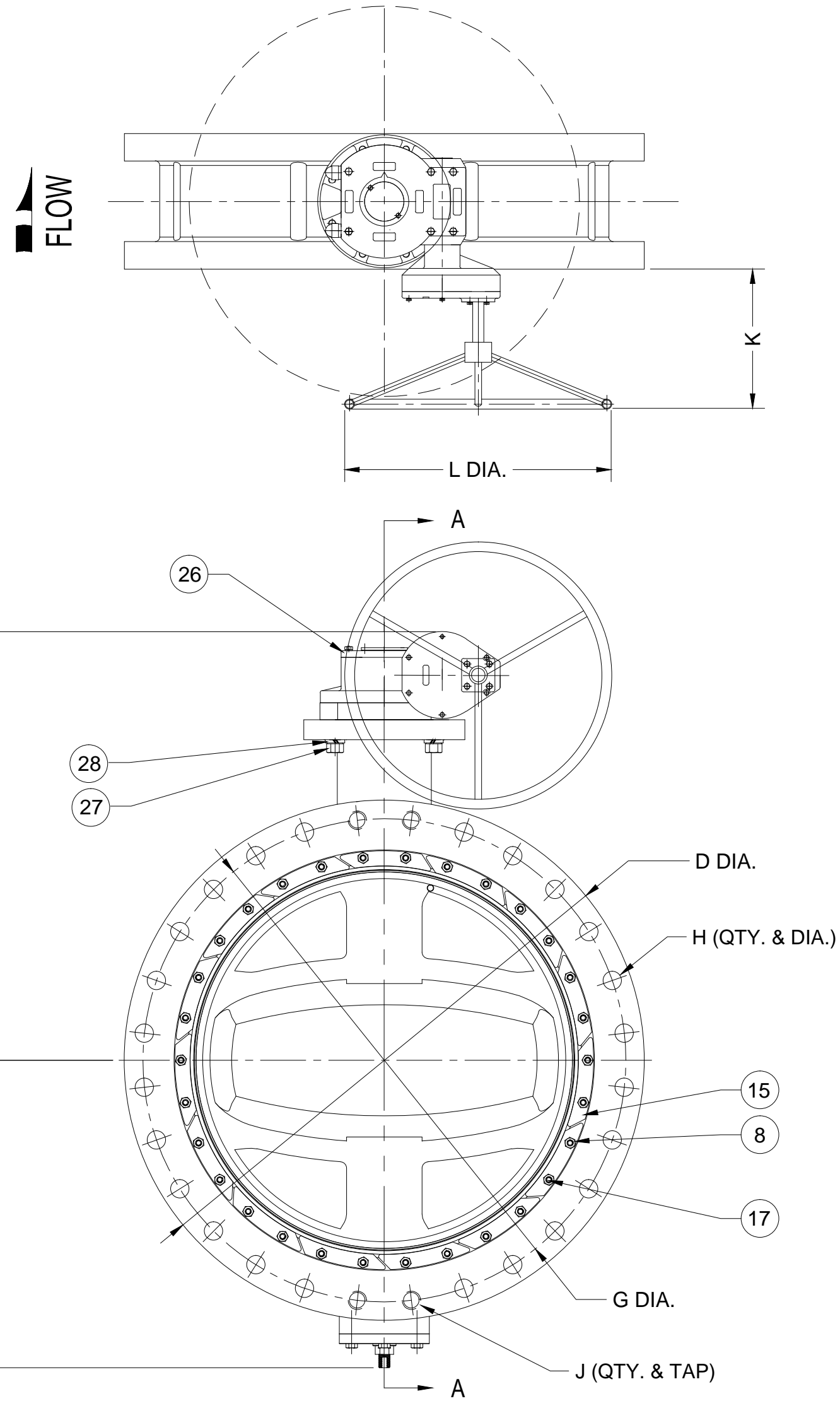
REV.	DESCRIPTION	DATE	BY
A	ADDED NO.2 IN NOTE & POSITION NOTE.	5-03-2011	RJT
B	WEIGHTS LISTED INCLUDE ACTUATOR	8-09-2011	SWR
C	REVISED PARTS LIST	06-23-2014	BRF

OPTIONAL ACTUATOR POSITIONS;  
CUSTOMER TO SPECIFY POSITION  
w/ORDER; POSITION "B" SHOWN  
ON MAIN VIEW.



- 1
- 2
- 3
- 4

PARTS LIST	
NO.	NAME
1	BODY
2	DISC
3	SEAT
4	UPPER SHAFT
5	DISC PINS
6	BEARING NUT
7	THRUST WASHER
8	RETAINER NUT
9	UPPER BEARING
10	O-RING
11	PACKING / U-CUP
12	THRUST COLLAR
13	KEY
14	LOWER BEARING
15	SEAT RETAINER SEGMENT
16	THRUST WASHER
17	RETAINER STUD
18	END PLATE
19	THRUST COLLAR SCREWS
20	ADJUSTABLE THRUST BEARING
21	END PLATE SCREWS
22	PACKING SCREWS
23	PACKING GLAND
24	LOWER SHAFT
25	DISC SET SCREWS
26	WORM GEAR ACTUATOR
27	ACTUATOR SCREWS
28	ACTUATOR WASHERS



- TECHNICAL REQUIREMENTS:
- DESIGN STANDARD, AWWA C504
  - FLANGE DRILLING PER ANSI B16.1 CLASS 125 FOR BOTH CLASS 150B AND 250B VALVES.
  - DIMENSIONS IN INCHES, WEIGHT IN POUNDS.
  - WORKING PRESSURE 150 PSI OR 250 PSI BASED ON CLASS.
  - SHAFT DIAMETER AND BODY WALL THICKNESS PER AWWA C504.

72"	18	49.61	67.50	86.50	25.96	82.50	(52) Ø2	(8) 1 3/4-5	18.56	24.00	11320
66"	18	46.13	63.44	80.00	23.09	76.00	(44) Ø2	(8) 1 3/4-5	18.56	24.00	9290
60"	15	41.59	56.31	73.03	21.32	69.25	(44) Ø2	(8) 1 3/4-5	17.07	24.00	7430
54"	15	37.83	53.19	66.25	18.27	62.75	(36) Ø2	(8) 1 3/4-5	17.07	24.00	6000
48"	15	34.88	41.72	59.50	16.50	56.00	(36) Ø1 5/8	(8) 1 1/2-6	11.67	23.63	4900
42"	12	29.68	37.94	53.00	15.00	49.50	(30) Ø1 5/8	(6) 1 1/2-6	13.17	23.63	3700
36"	12	26.63	35.31	46.00	12.00	42.75	(28) Ø1 5/8	(4) 1 1/2-6	11.36	23.63	2350
30"	12	22.91	31.91	38.75	9.00	36.00	(24) Ø1 3/8	(4) 1 1/4-7	11.36	23.63	2100
SIZE	A	B	C	ØD	F	ØG	H	J	K	ØL	WGT.

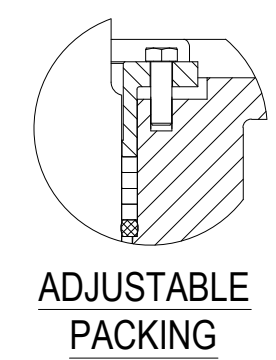
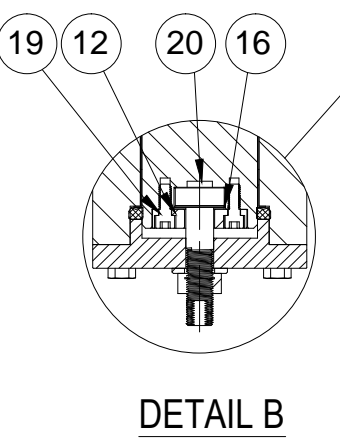
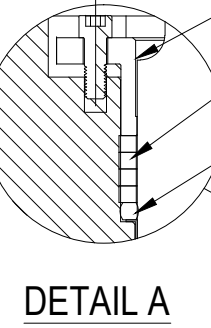
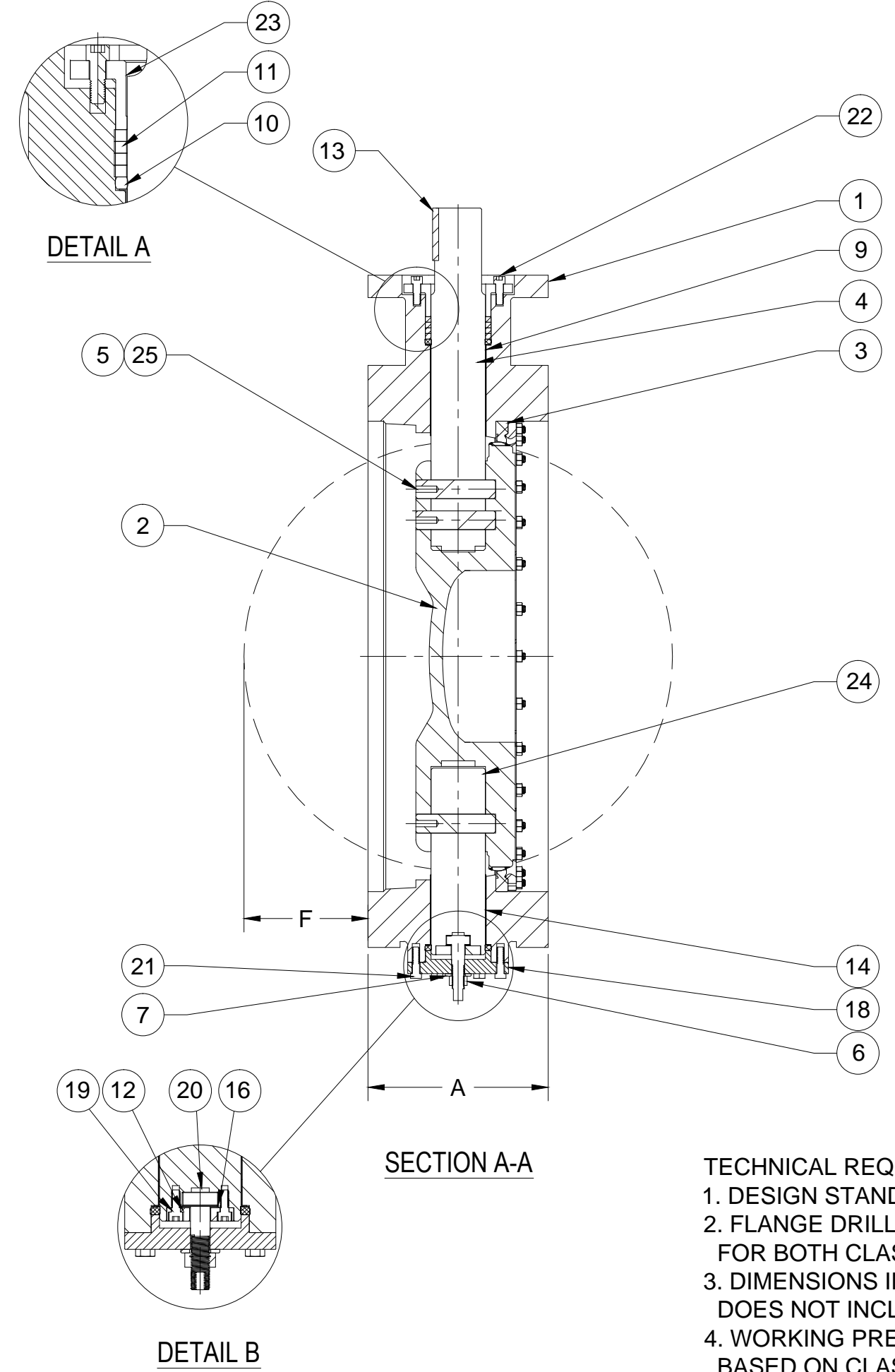
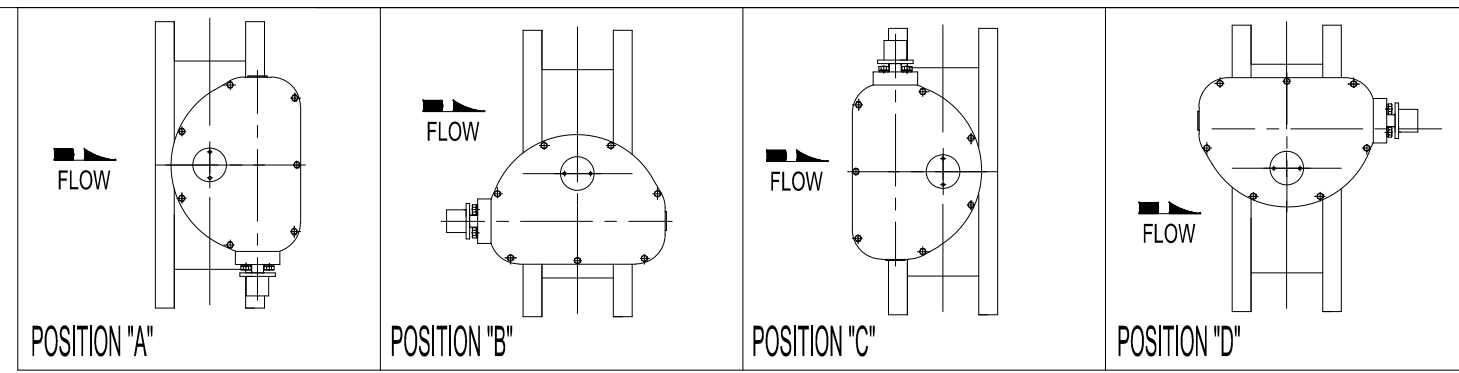
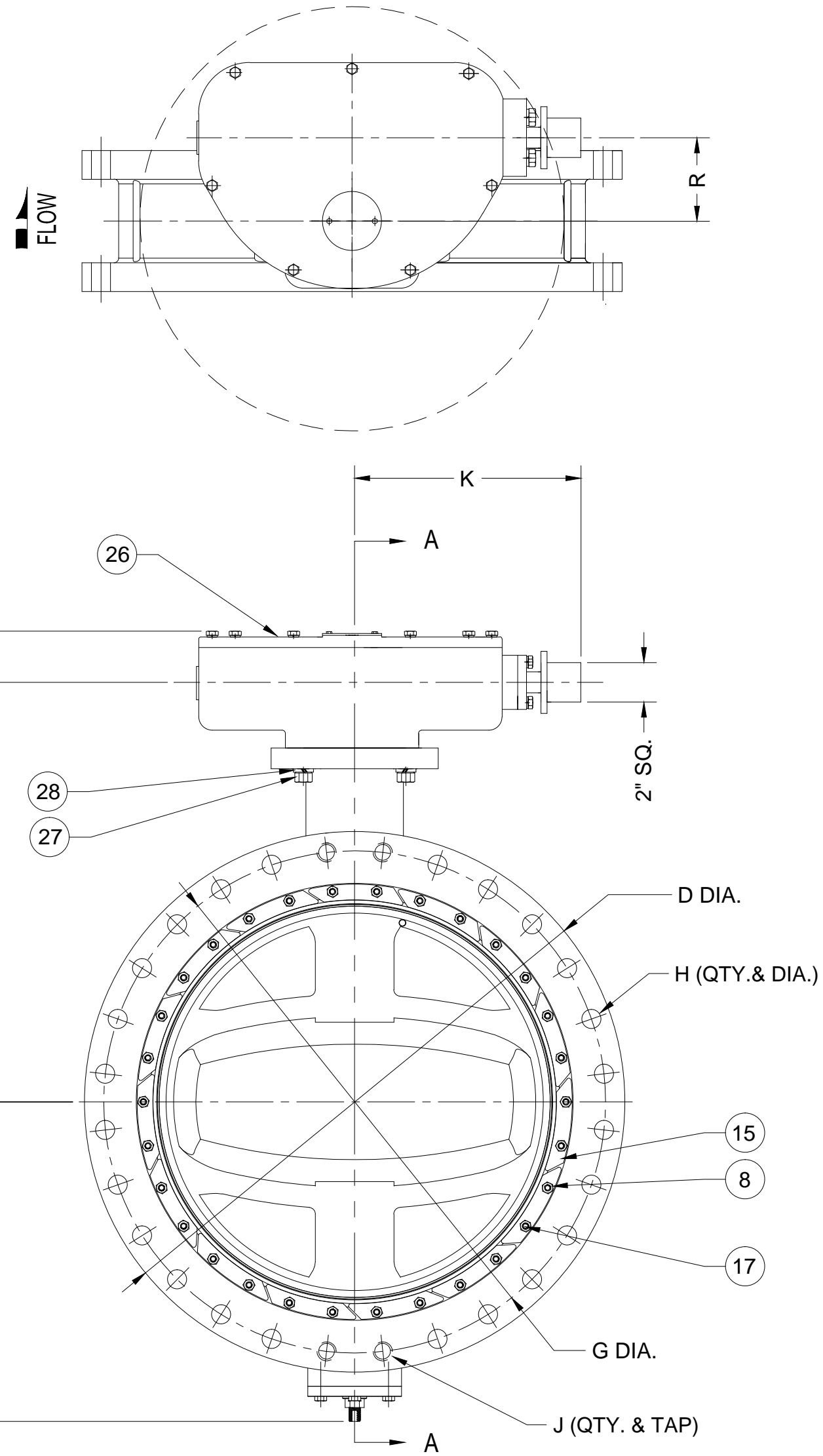
**GA INDUSTRIES, LLC.**

**30"-72" ANSI FLANGED BUTTERFLY VALVE  
W/ABOVE GROUND WORM GEAR ACTUATOR**

STANDARD TOLERANCES (UNLESS OTHERWISE NOTED): FINISHED SURFACES ONLY DIMENSIONS SHOWN IN INCHES x = ±0.02 xx = ±0.01 xxx = ±0.02 FRACTIONS ±1/64" ANGLES ±1' FINISH -XX RMS	<b>SERIAL NO.</b>	<b>SCALE</b> N.T.S.	<b>DRAWN BY</b> RJT	
	<b>REFERENCES</b>	<b>EFFECTIVE DATE</b> 01-15-2010	<b>APPR. BY</b> JT	
	<b>FIG. NUMBER</b> 804	<b>FILE</b> BF	<b>DRAWING NO.</b> BF-1022	<b>REV.</b> C

J:\BUTTERFLYBF-SHOWBF-1022-C.DWG

REV.	DESCRIPTION	DATE	BY
B	REVISED PARTS LIST	06-23-2014	BRF



PARTS LIST	
NO.	NAME
1	BODY
2	DISC
3	SEAT
4	UPPER SHAFT
5	DISC PINS
6	BEARING NUT
7	THRUST WASHER
8	RETAINER NUT
9	UPPER BEARING
10	O-RING
11	PACKING / U-CUP
12	THRUST COLLAR
13	KEY
14	LOWER BEARING
15	SEAT RETAINER SEGMENT
16	THRUST WASHER
17	RETAINER STUD
18	END PLATE
19	THRUST COLLAR SCREWS
20	ADJUSTABLE THRUST BEARING
21	END PLATE SCREWS
22	PACKING SCREWS
23	PACKING GLAND
24	LOWER SHAFT
25	DISC SET SCREWS
26	TRAVELING NUT ACTUATOR
27	ACTUATOR SCREWS
28	ACTUATOR WASHERS

- TECHNICAL REQUIREMENTS:
- DESIGN STANDARD, AWWA C504
  - FLANGE DRILLING PER ANSI B16.1 CLASS 125 FOR BOTH CLASS 150B AND 250B VALVES.
  - DIMENSIONS IN INCHES, WEIGHT IN POUNDS. DOES NOT INCLUDE ACTUATOR.
  - WORKING PRESSURE 150 PSI OR 250 PSI BASED ON CLASS.
  - SHAFT DIAMETER AND BODY WALL THICKNESS PER AWWA C504.

72"	18	49.61	66.41	86.47	25.98	82.50	(52) Ø2	(8) 1 3/4-5	19.13	57.56	10.50	10710
66"	18	46.13	60.38	80.00	23.09	76.00	(44) Ø2	(8) 1 3/4-5	19.13	53.50	10.50	8670
60"	15	41.59	54.00	73.03	21.32	69.25	(44) Ø2	(8) 1 3/4-5	17.00	48.50	8.50	6845
54"	15	37.83	50.88	66.25	18.27	62.75	(36) Ø2	(8) 1 3/4-5	17.00	45.41	8.50	5410
48"	15	34.88	44.38	59.50	16.50	56.00	(36) Ø1 5/8	(8) 1 1/2-6	15.03	39.88	7.50	4750
42"	12	29.68	40.59	53.00	15.00	49.50	(30) Ø1 5/8	(6) 1 1/2-6	15.03	36.10	7.50	3550
36"	12	26.63	35.83	46.00	12.00	42.75	(28) Ø1 5/8	(4) 1 1/2-6	14.60	32.72	5.00	2093
30"	12	22.91	32.44	38.75	9.00	36.00	(24) Ø1 3/8	(4) 1 1/4-7	14.60	29.33	5.00	1843
SIZE	A	B	C	ØD	F	ØG	H	J	K	M	R	WGT.

**GA INDUSTRIES, LLC.**

**30"-72" ANSI FLANGED BUTTERFLY VALVE  
W/BURIED SERVICE TRAVELING NUT ACTUATOR**

STANDARD TOLERANCES (UNLESS OTHERWISE NOTED) FINISHED SURFACES ONLY DIMENSIONS SHOWN IN INCHES x = ±.02 xx = ±.01 xxx = ±.002 FRACTIONS ±1/64" ANGLES ±1' FINISH -XX RMS	<b>SERIAL NO.</b>	<b>SCALE</b> N.T.S.	<b>DRAWN BY</b> RJT	
	<b>REFERENCES</b>	<b>EFFECTIVE DATE</b> 01-19-2010	<b>APPR. BY</b> JT	
	<b>FIG. NUMBER</b> 804	<b>FILE</b> BF	<b>DRAWING NO.</b> BF-1024	<b>REV.</b> B

J:\BUTTERFLYBF-SHOWBF-1024-B.DWG